

1

Find & Mark penetration site - 2cm medially and 1cm proximally to the tibial tuberosity.



2

Position the BIG with one hand to the site and pull out the Safety Latch with the other hand (for sterile technique, use sterile gloves).



3

Trigger the BIG at 90° to the surface.



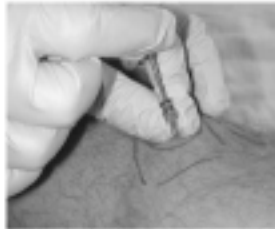
4

Remove the BIG.



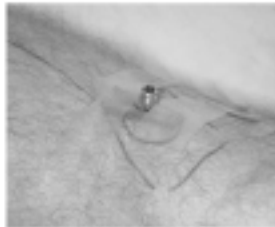
5

Pull out the stylet trocar.



6

Fix the cannula with the Safety Latch.



7

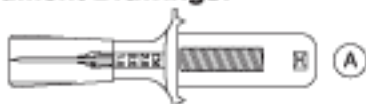
Connect Infusion Set with a Stopcock to a standard IV set (2.5ml, 5ml or 10ml syringe may be used). If necessary, 2-5cc of bone marrow can be aspirated into a heparin-coated syringe for laboratory sampling. For conscious patients consider flush of local anesthesia.



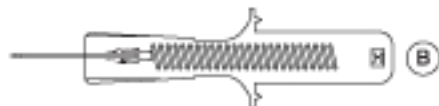
8

Adjust flow or inject drugs and fluids. Optimal flow maintains by high pressure up to 300mmHg to the infusion bag.

Instrument Drawings:



A. Before triggering (locked position).



B. After triggering.

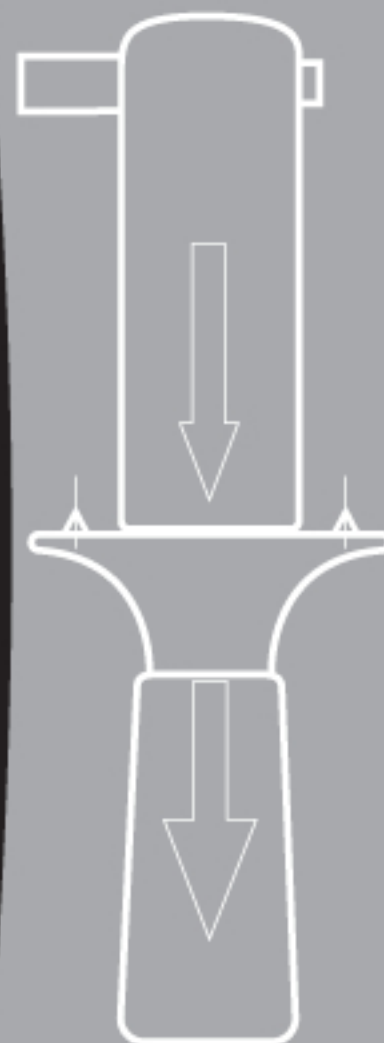
FDA APPROVED FOR ADULTS IN PROXIMAL TIBIA.

WARNING: Use of the B.I.G. is restricted to trained and skilled medics, nurses and paramedics.

CAUTION: The B.I.G. device is for single use only. When using the B.I.G. device, the possibility of air embolization may exist.

CONTRAINDICATIONS: Skin infection, tumor and fracture at the insertion site, Osgood Schlatter disease.

User's leaflet



WaisMed USA
3050 Post Oak Blvd., Suite 1710
Houston, Texas 77056
USA

Tel: 713-723-6000
Fax: 713-723-6221
e-mail: mail@waismed.com